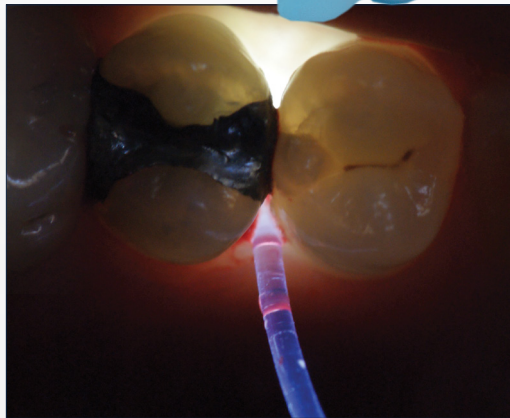
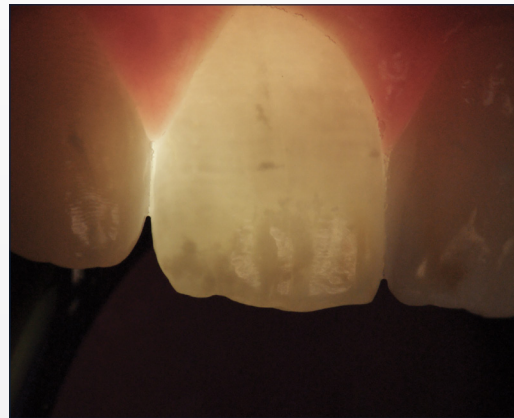


# MICROLUX 2™

TRANSILLUMINATOR



Checking Inter-proximal Caries



White Spot Lesions

Photos Courtesy of Dr. Howard Strassler

43 Miry Brook Road • Danbury, CT 06810 • (203) 778-0200

**AdDent**  
INCORPORATED

Advancing Dental  
Excellence

ISO 9001 CERTIFIED & 13485 COMPLIANT | ALL PRODUCTS ARE FDA CLEARED

Made in the USA | [www.addent.com](http://www.addent.com)

## MICROLUX 2 TRANSILLUMINATOR

This ergonomic new high intensity model includes new features that have been requested by many dentists. An easy to use push button controls the dual intensity operation and provides for better visualization. The battery has a low level indicator, and the unit has a voltage regulator to insure constant light output. It uses 2 easily available AAA batteries. The Microlux 2 is available with a 2 or 3 mm glass light guide. The Transillumination technique helps visualize cracks, crown fractures, root canal orifice, posterior and anterior caries. All accessories are autoclavable except for disposable fiber light guides. Take out the reference to the Microlux.

The accessory attachments include Proximal caries attachment with .75mm single use fiber, Endo Lite attachment with 1 mm single use fiber, Perio Probe attachment 0.75 mm single use fiber, 5 packed lighted autoclavable mirrors, and Pedo 2mm glass light guide. Protective sleeves are available. The ergonomic design provides an anti-roll feature.

### FEATURES

- Slim Ergonomic Design
- High & Low Output Levels
- Conveniently Located Control Button
- Battery Voltage Regulator
- Battery Low Level Indicator
- Auto Turn Off

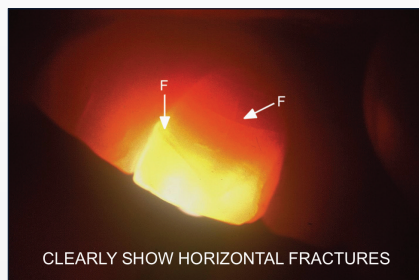
### BENEFITS

- Easy Handling
- Better Visualization (High Setting), Better Photos (Low Setting)
- Easy One Finger Operation
- Constant Light Output
- Advanced Notification To Change The Battery
- Multiple Applications with One Device
- The Microlux 2 Unit Will Automatically Turn Itself Off After 7 Minutes Of Use To Conserve Battery Power



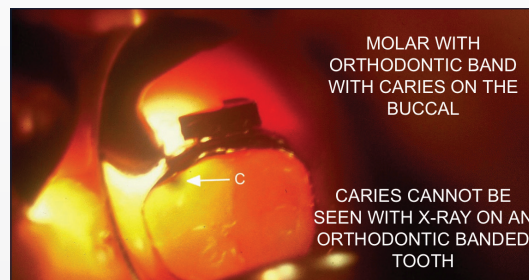
### OTHER ATTACHMENTS AVAILABLE FOR THE MICROLUX 2:

3 mm glass light guide, 2 mm glass light guide, Proximal caries attachment, Endo Lite attachment, Perio Probe attachment with 3, 5, and 7mm illuminated markings, 5 packed lighted mirror, and Pedo 2mm glass light guide.



CLEARLY SHOW HORIZONTAL FRACTURES

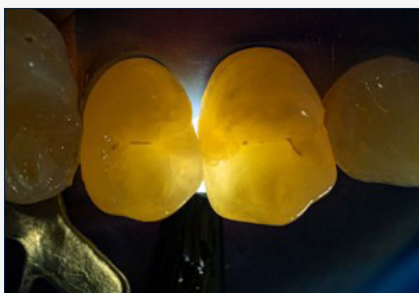
Showing Horizontal Fracture Line



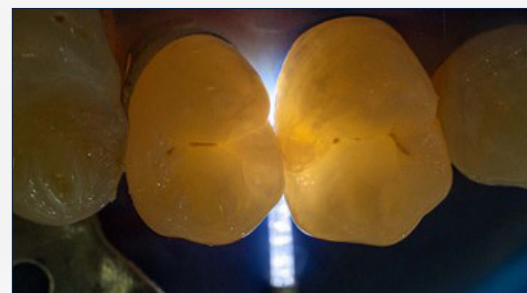
MOLAR WITH  
ORTHODONTIC BAND  
WITH CARIES ON THE  
BUCCAL

CARIES CANNOT BE  
SEEN WITH X-RAY ON AN  
ORTHODONTIC BANDED  
TOOTH

Orthodontic Band with Caries on the Buccal



Using 3 mm Glass Light Guide



Using 0.75 mm Proximal Light Fiber Optic

Follow us on social media:     [info@addent.com](mailto:info@addent.com)



**AdDent**  
INCORPORATED

Advancing Dental  
Excellence

ISO 9001 CERTIFIED & 13485 COMPLIANT | ALL PRODUCTS ARE FDA CLEARED



Made in the USA | [www.addent.com](http://www.addent.com)