



*Editors' Choice*

THE DENTAL ADVISOR  
www.dentaladvisor.com

RATINGS:

Excellent + + + + +

Very Good + + + +

Good + + +

## ALL-BOND UNIVERSAL

### *Bisco Dental Products*

(800) 247-3368, (847) 534-6000

www.bisco.com

### Description

**ALL-BOND UNIVERSAL** is a single-component, light-cured bonding agent that combines etching, priming and bonding in one bottle. It may be used in self-etch, total-etch or selective-etch bonding techniques. Compatible with all dental materials, **ALL-BOND UNIVERSAL** is an ethanol/water-based adhesive containing MDP. It bonds to dentin, cut and uncut enamel. It is fully compatible with light-cured, self-cured and dual-cured resin composites and can be used for the bonding of both indirect and direct restorations, for porcelain repairs and as a protective varnish for glass ionomer-based restorations. **ALL-BOND UNIVERSAL** is also indicated for desensitization of preparations prior to provisionalization/immediate dentin sealing and for the desensitization of exposed root surfaces. The kit contains a 6 mL bottle of adhesive, a 5 g syringe of Select HV Etch, a high viscosity etchant and accessories. **ALL-BOND UNIVERSAL** was evaluated by 19 consultants in over 900 uses. It received a 96% clinical rating.



### Suggested Retail Cost

Kit	\$130.00
Refill	\$110.00

### Clinical Observations

#### Instructions/Packaging

**ALL-BOND UNIVERSAL** has many indications which are thoroughly explained in the instructions for use. The laminated technique card was found to be a very good chairside reference for common procedures such as direct composite restorations.

The packaging of **ALL-BOND UNIVERSAL** in a plastic dropper bottle with a screw-on cap is simple and neat. The 6 mL size is a larger volume than many other adhesives. No refrigeration is required, making it convenient to store.

#### Dispensing/Application

The low viscosity of **ALL-BOND UNIVERSAL** makes it easy to dispense from the bottle. A gentle squeeze produces single-drop delivery. Care must be taken to avoid additional pressure on the bottle, which could express too much liquid. Excellent surface wettability is achieved by the low viscosity of the adhesive. It coats the tooth well and leaves a glossy surface after light curing.

### Consultants' Comments

*"Easy to use and works for everything!"*

*"Less technique sensitive than other adhesives."*

*"The built in desensitizer eliminates one step from our previous protocols."*

*"Works great with my dual-cure core material."*

*"Low viscosity wets the tooth well."*

*"Film thickness does not interfere with seating of indirect restorations."*

*"Application of two coats makes the procedure longer."*

*"No silane is included for priming silica-based ceramics."*

## Clinical Procedure

**ALL-BOND UNIVERSAL** can be used with or without a phosphoric acid etchant for direct bonding procedures. Whether used in a self-etch or total-etch technique, two coats of adhesive followed by air drying are required. Light curing time is 10 seconds. When bonding indirect restorations, the adhesive must be applied on the inner surface of the restoration and light cured. Some confusion was noted regarding the manufacturer's recommendation that a separate ceramic primer (silane) should be used on silica-based ceramic veneers instead of **ALL-BOND UNIVERSAL**.

## Versatility

The usefulness of **ALL-BOND UNIVERSAL** for various restorative procedures was rated excellent by consultants. Having one adhesive that can be used for self-etch, total-etch, direct, and indirect bonding procedures simplifies the clinical procedure. Its compatibility with self- and dual-cured composites without a separate dual-cure activator reduces the inventory of materials required in the office.

## Retention

The durability of bond during the evaluation period was rated excellent.

## Sensitivity

No instances of post-operative sensitivity were noted.

## Summary

**ALL-BOND UNIVERSAL** provides a one-bottle solution for most clinical bonding procedures. It is easy to apply and spreads on the tooth to a thin, even coat. Thirty-seven percent of consultants rated **ALL-BOND UNIVERSAL** better than other universal bonding agents; 53% reported it was equivalent. Seventy-four percent would switch to **ALL-BOND UNIVERSAL** and 90% would recommend it to a colleague.

## Clinical Tips

- Dispense immediately before use and recap tightly after use - it evaporates quickly.
- Use the included high-viscosity **SELECT HV ETCH** for the selective-etch technique.
- The tooth surface should be moist before applying **ALL-BOND UNIVERSAL**.

### Direct Placement



Figure 1: Self-etching technique: Prepare cavity. Wash thoroughly with water spray. Remove excess water (do not desiccate).



Figure 2: Apply **ALL-BOND UNIVERSAL** according to instructions.



Figure 3: Evaporate excess solvent by air-drying thoroughly. The surface should have a uniform glossy appearance.



Figure 4: Continue with placement of the restorative material.

### Indirect Placement

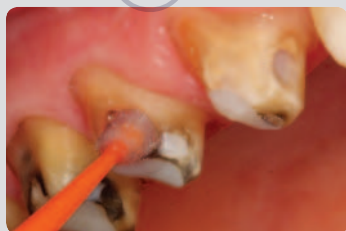


Figure 1: Maxillary right posterior teeth prepared for full-contoured zirconia restorations. Two coats of **ALL-BOND UNIVERSAL** applied and light-cured.



Figure 2: Application of **ALL-BOND UNIVERSAL** (or **Z-PRIME PLUS**) to inside surface of crowns.



Figure 3: Restoration completed after cementation with **DUO-LINK**.  
**NOTE:** Due to the low film thickness, **ALL-BOND UNIVERSAL** is easily spread thin and will not affect cementation procedures, even with tight fitting restorations.