



7 PREVIOUS EVALS  
21 YEARS EXPERIENCE

The polarizing filter proved especially useful for matching direct restorative material shades.

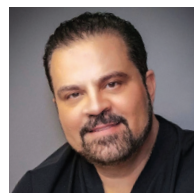
William Rowe Jr., DDS  
Jonesboro, AR



7 PREVIOUS EVALS  
38 YEARS EXPERIENCE

It is very easy to operate and is very comfortable in your hand.

Cary Goldstein, DDS  
Wickliffe, Ohio



1 PREVIOUS EVALS  
28 YEARS EXPERIENCE

The light has been very useful for picking shades, especially on single units.

Anthony Vocaturo, DDS  
Colts Neck, NJ

ADDEnt

# Rite-Lite PRO

4.1  
Dental PRODUCT SHOPPER  
RECOMMENDED PRODUCT

Rite-Lite PRO ensures a superior shade match by simulating varying lighting conditions with 3 different modes of visible light

Matching the shade of a dental restoration to natural dentition can be a challenging and time-consuming process for dental professionals. Determining if a shade match is accurate is often a subjective decision that's influenced by many factors, including the lighting used during the shade-matching process. Sometimes, when a patient returns home with a new restoration and views the results under incandescent or ambient lighting, the shade can appear slightly off.

What if a handheld light could help make the shade-matching process more objective and scientific and, as a result, more accurate? According to Dr. Harold Biller, AdDent's Rite-Lite PRO multispectral/HI CRI shade light is doing just that. Concerned about "mismatches on crown shades," Dr. Biller was excited to try the innovative Rite-Lite PRO, which allows him to view teeth and match shades under 3 modes of visible light and a black light spectrum. By simulating varying lighting conditions found in indoor and outdoor environments, the Rite-Lite PRO helps clinicians perfect the art of shade matching.

After using the light, Dr. Biller said he got "perfectly matched crowns" and determined, "This product is fantastic." He added, "I'm so glad Dental Product Shopper allowed me to test this product. I would have never believed that a light like this could make such a difference in matching shades."

### Color Accuracy

Rite-Lite PRO's HI CRI LEDs re-create the visual spectrum produced by natural sunlight, with 3 selectable intensity levels for visible spectra modes that improve visualization and control glare. A black light mode ensures a match with natural tooth fluorescence, and a polarizing filter attachment reduces glare and reflective highlights. The shade is first taken with 5500°K, after which the match is verified under



incandescent (3900°K), ambient (3200°K), and black light. When the chosen shade matches in all 4 wavelengths, an accurate match is confirmed.

"The ability to use 3 different Kelvin light temperatures really simplifies the worry about mismatched crowns due to different lighting conditions," shared Dr. Biller. Acknowledging that "shade taking is always a challenge, especially under differing lighting conditions," Cary Goldstein, DDS, explained that "Rite-Lite PRO allows you to view any tooth under several different light conditions, including daylight, room light, ambient, and black light conditions, which allows me to achieve a better overall shade match." He added, "These situations cannot be duplicated without the aid of this device." Hoping to achieve "precise shade matching," Dr. William Rowe Jr. said the light "simulated different lighting conditions and provided a polarized view of teeth and shade guides," which made it easier for him to confirm shade matching with direct restorative materials. "I really appreciate the ability to use the polarizing filter directly; it eliminates having to take a polarized photograph and proved especially useful for matching direct restorative material shades," Dr. Rowe added.

### Design & Ease of Use

The Rite-Lite PRO is a handheld device that's "very

## takeaways

- A handheld device allows clinicians to view teeth and match shades under 3 modes of visible light and a black light
- Improves accuracy of shade match by simulating varying lighting conditions found in indoor and outdoor environments
- A polarizing filter attachment reduces glare and reflective highlights
- Powered by 24 LED lights with a rechargeable lithium-ion battery



Harold Biller, DDS  
Jamaica Estates, NY

"I would have never believed that a light like this could make such a difference in matching shades."

easy to operate and very comfortable in your hand," according to Dr. Goldstein, while Drs. Biller and Rowe agreed that the light is easy to use, with Dr. Rowe commenting, "It's great for quick chairside matches." Dr. James Sorge recommended a "better handle and maybe a larger view field," and Dr. James Black said the instructions need to be clearer. Equipped with 24 LEDs powered by a rechargeable lithium-ion battery, the light includes a USB power supply, a voltage regulator, an auto-shutoff feature, and a battery charge indicator. According to AdDent, the user can easily switch between 3 intensity levels, but Dr. Jimmy Tran suggested "a redesign of the buttons or light selection mechanism" because he experienced some difficulty cycling through the different light modes.

### Accuracy of Final Restoration

"I love the light," said Dr. Anthony Vocaturo. "I do many anterior esthetic cases and the light has been very useful for picking shades, especially on single units." He called it "a great tool not only for me but for my patient in terms of involvement; it was great for patient experience." When Dr. Rowe "cured a sample shade prior to dehydration and evaluated it with the light and polarizing filter," he said he achieved an excellent shade match, thanks to the light. After past difficulties with shade selection

due to "different light sources competing," Nicholas Vece, DMD, said he was able to "dial in a specific light source for a truer color match." Noting that using the light "really takes the stress out of getting an exact match for anterior crowns," Dr. Biller reported, "All the shade guides I matched with the light came back correct from the lab." Calling it "a great adjunct for shade selection," Dr. Jerry Stahl determined, "If you're having issues selecting the correct shade this would be a great tool."

### Overall Satisfaction

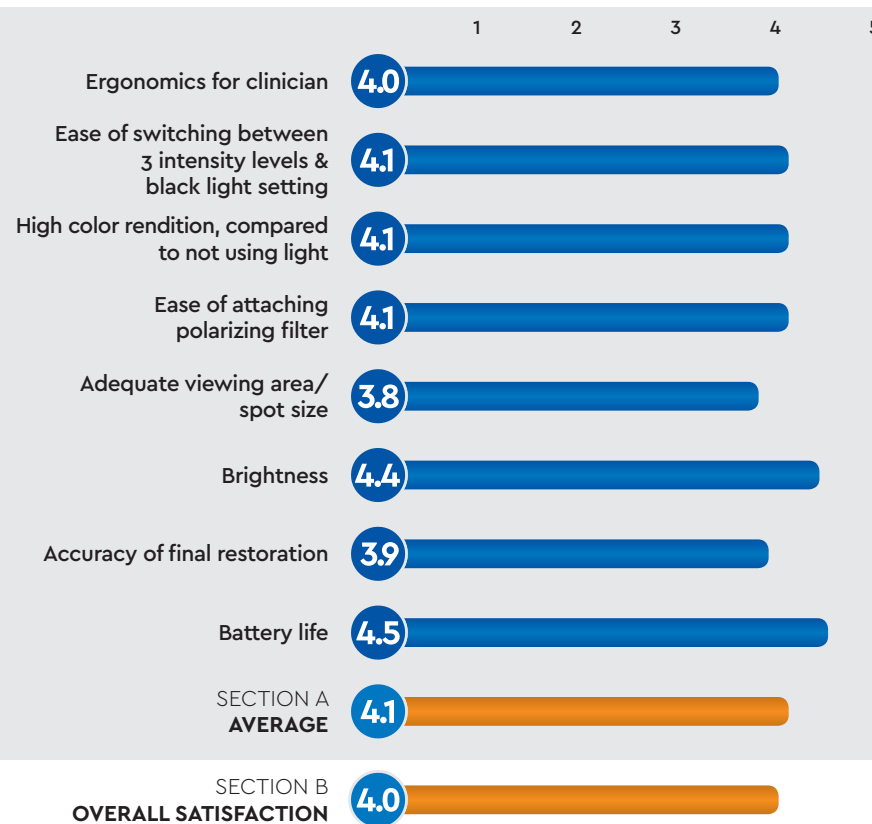
Rite-Lite PRO "is a great idea and an easy-to-use product," Dr. Rowe concluded. "It's a great little tool, which was especially useful in shade matching for direct restorative work." Dr. Biller summed up his experience by saying, "It completely delivers on the manufacturer's claims."

### FOR MORE INFORMATION:

855.211.3413  
www.addent.com

## PRODUCT EVALUATION SNAPSHOT

CRITERIA BASED ON AVERAGE SCORE (OUT OF 5)



ADDEnt  
RITE-LITE PRO

FINAL SCORE  
AVERAGE OF SECTIONS A AND B

4.1

